

clever



3 Arundel Crescent

, Plymouth, PL1 5DY

£105 Per week

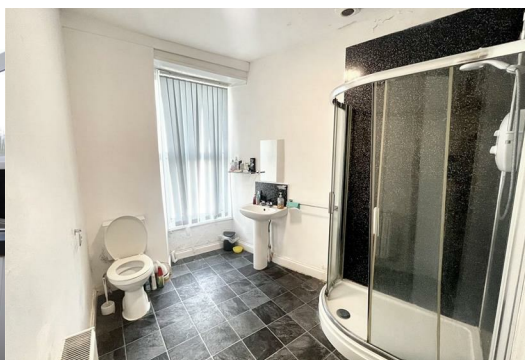


STUDENT PROPERTY- ROOM 5 AVAILABLE FROM 3RD OF MARCH 2025!

Welcome to the delightful 6-bedroom house nestled in the tranquil Arundel Crescent, Plymouth. This charming property is ideal for those in search of affordable student accommodation in a serene neighbourhood. With 2 bathrooms, convenience and comfort are at the forefront of this lovely home.

Picture yourself basking in the peace and quiet of the surrounding area, perfect for focusing on your studies or unwinding after a busy day. The property features a garden, offering a picturesque outdoor space where you can unwind or entertain friends.

Do not let this opportunity slip away! Reach out to us today to schedule a viewing and discover the incredible potential this house holds. Make this house your sanctuary and embrace the wonderful lifestyle it has to offer.



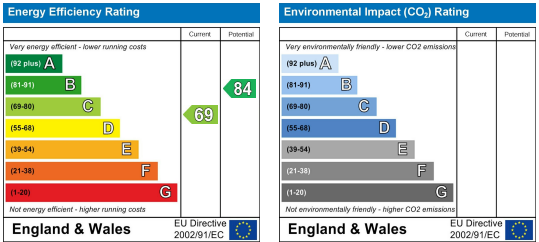
Area Map



Floor Plans



Energy Efficiency Graph



These particulars, whilst believed to be accurate are set out as a general outline only for guidance and do not constitute any part of an offer or contract. Intending purchasers should not rely on them as statements of representation of fact, but must satisfy themselves by inspection or otherwise as to their accuracy. No person in this firms employment has the authority to make or give any representation or warranty in respect of the property.